

Cellphone Repeater user manual

Low radiation



Large coverage



Compatible operator

Easy installation

table of Contents

- 01 Product description
- 02 System block diagram and application
- 03 Product shape
- 04 The main technical parameters
- 05 Equipment installation
- 06 FAQ and troubleshooting

01 Product description



Mobile Signal Enhancement King is a mobile phone signal amplifier designed for individual users. It is mainly used to solve the problem of weak indoor mobile phone signal, poor call quality, low call disconnection or low Internet access rate. Its main feature is high quality and coverage. Large range, low radiation and easy installation. The built-in antenna design does not affect the interior beauty. It is widely used for coverage of signal blind areas such as ordinary households, small and medium-sized enterprises, hotels, office buildings, and underground parking lots.

Product feature

1. Industrial grade design guarantees high quality quality;
2. Low power consumption greatly reduces the cost of use;
3. Wall or ceiling installation, signal coverage is large;
4. Built-in antenna, easy to install;
5. Green, ultra-low radiation, protect users' health.

02 System block diagram and application



City dense high-rise building

Hotel, Vila, Metting room



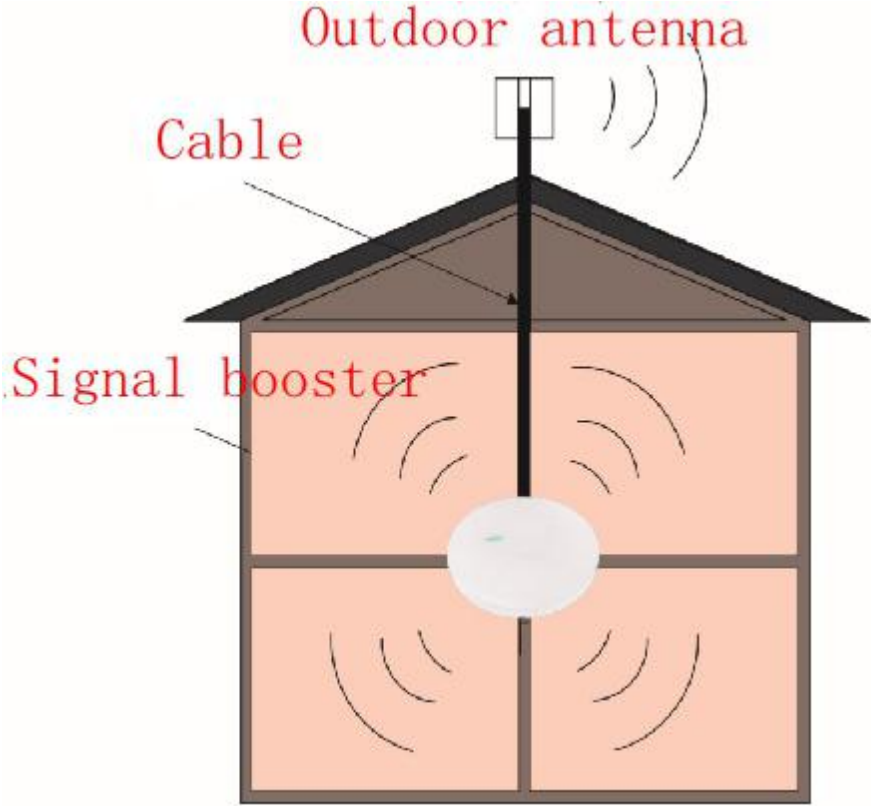
City village



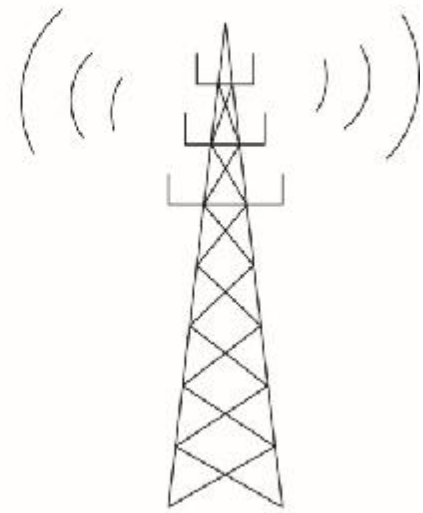
Underground parking lot



Mountainous areas in rural areas



System block diagram



Base station

Application
◆ City dense high-rise building
◆ Hotel, Vila, Metting room
◆ City village
◆ Underground parking lot
◆ Mountainous areas in rural areas

03 Product shape



Shape **Connector**

Size: diameter $\varphi=204\text{mm}$
thickness $h=52\text{mm}$



Main equipment



**Mounting
Accessories**



**Receiving signal
antenna with 15
meter feeder**



Power charge

04 The main technical parameters



Network Type	CDMA(2/3G)	GSM900(2G)	DCS1800(2G/4G)	WCDMA(3G)	FDD-LTE(4G)	TD-LTE(4G)
Frequency range	UL : 825-835MHz DL : 870-880MHz	UL : 890-915MHz DL : 935-960MHz	UL : 1710-1785MHz DL : 1805-1880MHz	UL : 1920-1980MHz DL : 2110-2170MHz	UL : 2500-2570MHz DL : 2620-2690MHz	D:2570-2620MHz F:1880-1920MHz
Gain	<input type="checkbox"/> 60 <input type="checkbox"/> 60 <input type="checkbox"/> 65 <input type="checkbox"/> 65	<input type="checkbox"/> 60 <input type="checkbox"/> 60 <input type="checkbox"/> 65 <input type="checkbox"/> 65	<input type="checkbox"/> 60 <input type="checkbox"/> 60 <input type="checkbox"/> 65 <input type="checkbox"/> 65	<input type="checkbox"/> 60 <input type="checkbox"/> 60 <input type="checkbox"/> 65 <input type="checkbox"/> 65	<input type="checkbox"/> 60 <input type="checkbox"/> 60 <input type="checkbox"/> 65 <input type="checkbox"/> 65	<input type="checkbox"/> 60 <input type="checkbox"/> 60 <input type="checkbox"/> 65 <input type="checkbox"/> 65
Output power (dBm)	<input type="checkbox"/> 20 <input type="checkbox"/> 23 <input type="checkbox"/> 17 <input type="checkbox"/> 15	<input type="checkbox"/> 20 <input type="checkbox"/> 23 <input type="checkbox"/> 17 <input type="checkbox"/> 15	<input type="checkbox"/> 20 <input type="checkbox"/> 23 <input type="checkbox"/> 17 <input type="checkbox"/> 15	<input type="checkbox"/> 20 <input type="checkbox"/> 23 <input type="checkbox"/> 17 <input type="checkbox"/> 15	<input type="checkbox"/> 20 <input type="checkbox"/> 23 <input type="checkbox"/> 17 <input type="checkbox"/> 15	<input type="checkbox"/> 20 <input type="checkbox"/> 23 <input type="checkbox"/> 17 <input type="checkbox"/> 15
Connector type	SMA/F					
Power charge	Adapter : AC Input 110-240V DC Output 5-12V					

05 Equipment installation



1 outdoor antenna installation 2 Connect the main equipment with the outdoor antenna and turn on the power 3 Observe indoor signal strength

Install the outdoor antenna with a mobile phone to find a place where the signal is good and easy to install.

Connect the RF cable connector of outdoor antenna with the input port of the main unit, and turn on the power of the power adapter.

Observe the signal strength indication of the host, select the indoor installation position until the signal coverage is the best, then fix the equipment mounting bracket with screws and hang the equipment on the mounting bracket.

06FAQ and troubleshooting



	FAQ	Troubleshooting way
1	The main equipment cannot be power on to work	<ul style="list-style-type: none">• Check if the power outlet is normal.• Check if the power adapter is normal.
2	When the main equipment is working, but the output signal is weak	<ul style="list-style-type: none">• Check if the input RF cable and connector are tight;• Use your mobile phone to check if the outdoor antenna position has a strong signal. ;
3	The phone signal is full while the call quality is poor and the internet speed is low.	<ul style="list-style-type: none">• Check if the input RF cable is damaged and the connector is tight;• Adjust the position of the host and the outdoor antenna. It is recommended that the horizontal distance be greater than 10 meters, and it is better to have a wall in the middle to prevent the host from self-exciting.
4	The host does have signal output, but the indoor coverage area is small.	<ul style="list-style-type: none">• Adjust the position of the outdoor antenna to increase the received signal strength;• Place the host in the center of the coverage area to cover a larger area;• Replace the higher power host.